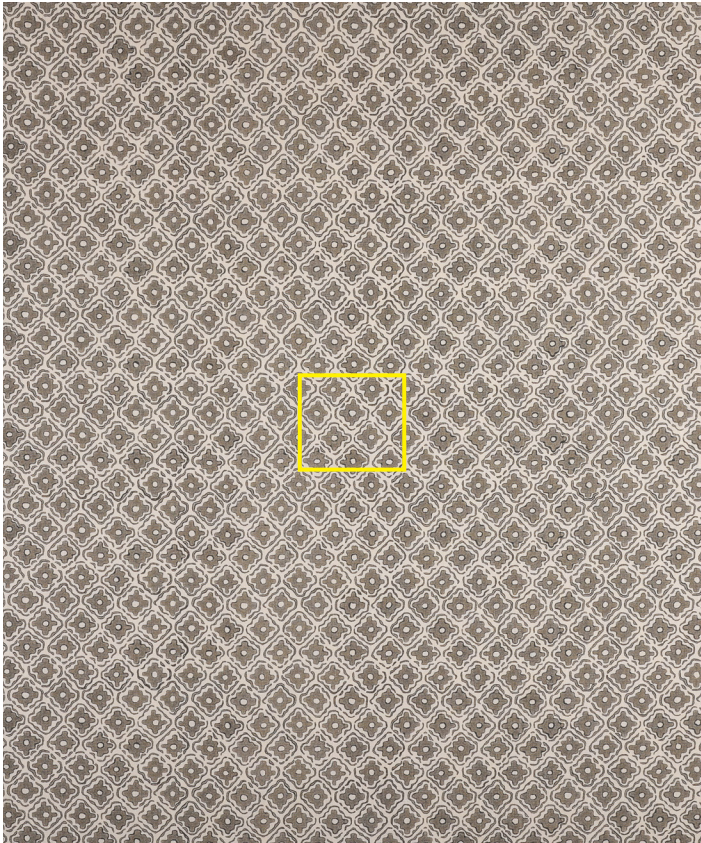


Tali Steel | TALI-05-C



Design	Tali
Colour	Steel
Code	TALI-05-C
Composition	100% Linen
Width	140.5cm / 55.5in
Repeat	10.5cm (h) 9.5cm (v) 4in (h) 3.75in (v)
Weight	286g/sqm
Notes



Tali Steel | TALI-05-C

www.namaysamay.com

